

**TURNING POINT**

FLOORING & KITCHEN

[www.turningpointec.com](http://www.turningpointec.com)



LUXURY VINYL FLOORING  
**CATALOG**

# VEC

**Construction**  
High performance Luxury Vinyl Tile

**Type**  
Resilient

**Length**  
23.62

**Finish**  
ExoGuard®

**Wear Layer**  
20mil

**Spec**  
2.5mm

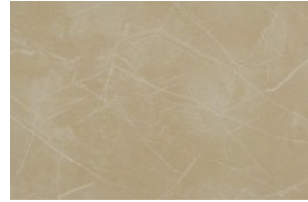
**Width**



VEC - 00100



VEC - 00200



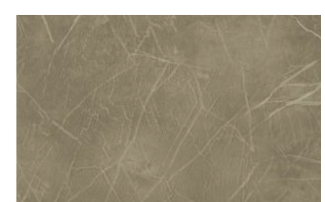
VEC - 00202



VEC - 00208



VEC - 00210



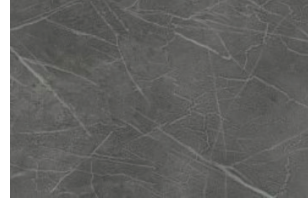
VEC - 00300



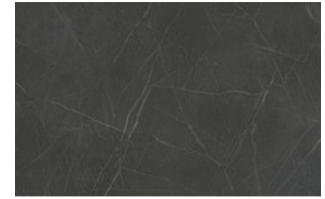
VEC - 00400



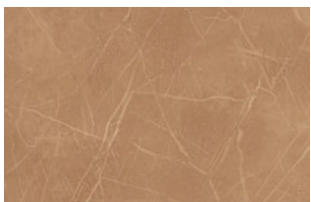
VEC - 00500



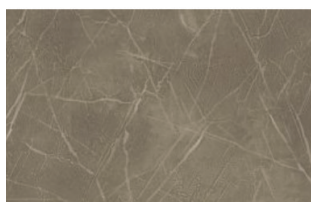
VEC - 00504



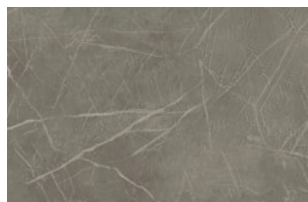
VEC - 00512



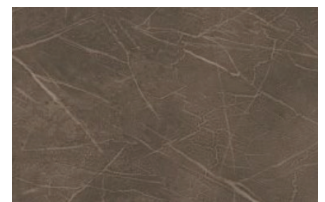
VEC - 00600



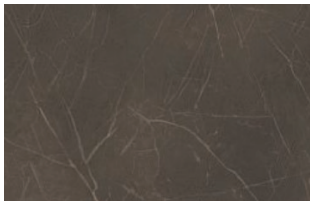
VEC - 00702



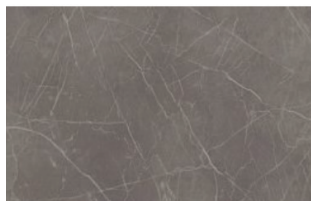
VEC - 00716



VEC - 00724



VEC - 00730



VEC - 00900

# CUU

**Construction**  
Heavy Commercial Luxury Vinyl Tile

Type	Length	Finish
Resilient	24.00	ExoGuard®
Wear Layer	Spec	Width
20mil	2.5mm	24.00



CUU - 00365  
Width:



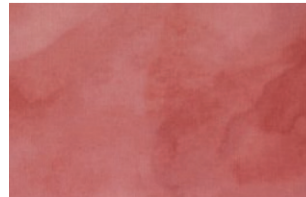
CUU - 00366  
SQF



CUU - 00498



CUU - 00499



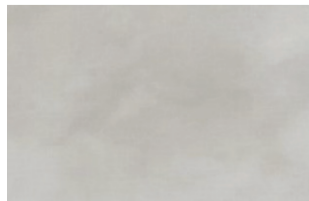
CUU - 00832



CUU - 00932



CUU - 00933



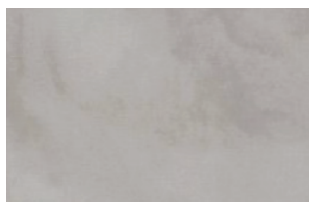
CUU - 01163



CUU - 02088



CUU - 04001



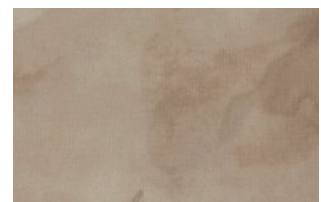
CUU - 05205



CUU - 06035



CUU - 06037



CUU - 07298



# COD

**Construction**  
Heavy performance Luxury Vinyl Tile

Type	Length	Finish
Resilient	48.00	ExoGuard®
Wear Layer	Spec	Width
20mil	2.5mm	8.00



COD - 00363



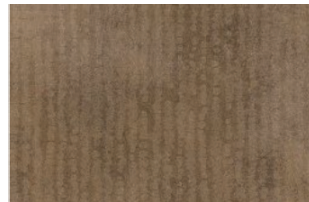
COD - 00364



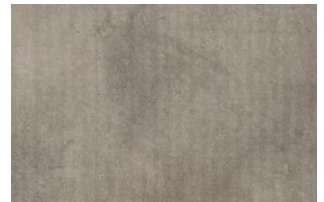
COD - 00495



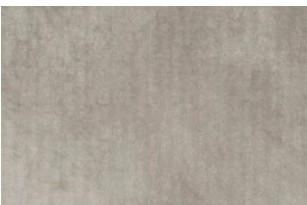
COD - 00496



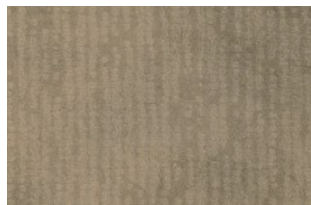
COD - 00831



COD - 01132



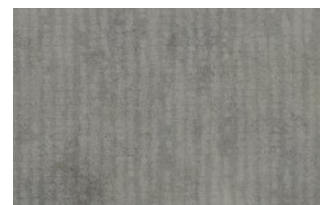
COD - 01133



COD - 02068



COD - 05177

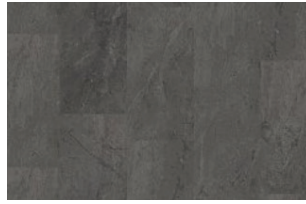


COD - 05178

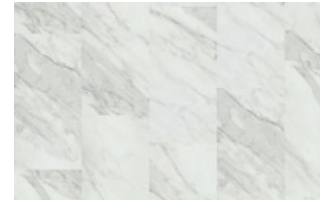
# OBE

**Construction**  
Heavy performance Luxury Vinyl Tile

<b>Type</b>	<b>Length</b>	<b>Finish</b>
Resilient	24.00	ExoGuard®
<b>Wear Layer</b>	<b>Spec</b>	<b>Width</b>
20mil	2.5mm	12.00



OBE - 00938



OBE - 01172



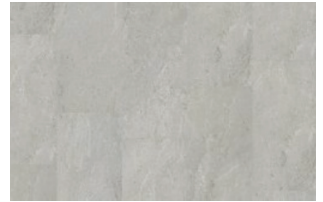
OBE - 1173



OBE - 01174



OBE - 05214



OBE - 05215

# STR

**Construction**  
Heavy performance Luxury Vinyl Tile

Type	Length	Finish
Resilient	60.00	ExoGuard®
Wear Layer	Spec	Width
20mil	2.5mm	9.00



STR - 00367



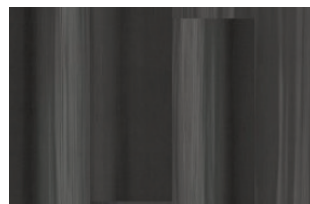
STR - 00368



STR - 00833



STR - 00835



STR - 00934



STR - 01164



STR - 01165



STR - 02089



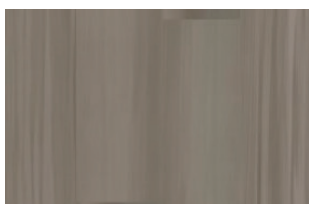
STR - 04002



STR - 04003



STR - 04004



STR - 05206



STR - 05207



STR - 06038



STR - 07300

# SUS

**Construction**  
Performance Luxury Vinyl Tile

**Type**  
Resilient

**Length**  
48.00

**Finish**  
ExoGuard®

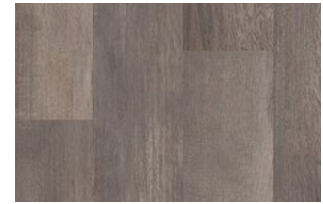
**Wear Layer**  
20mil

**Spec**  
2.5mm

**Width**  
5.96



SUS - 00116



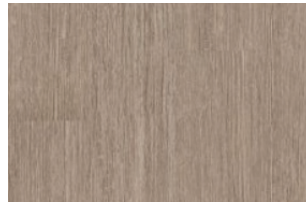
SUS - 00170



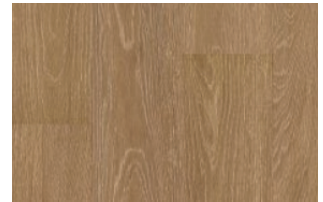
SUS - 00173



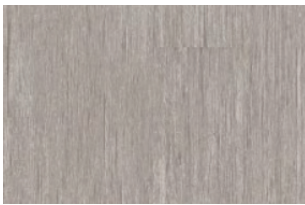
SUS - 00174



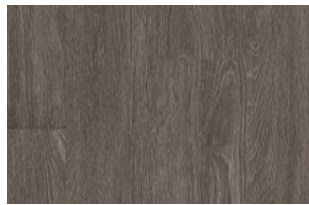
SUS - 00216



SUS - 00256



SUS - 00559



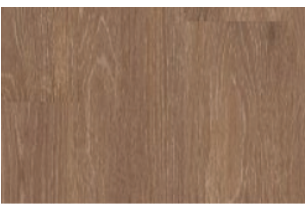
SUS - 00564



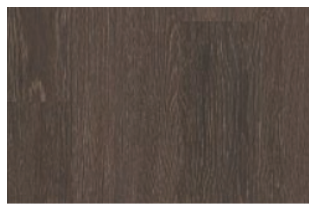
SUS - 00568



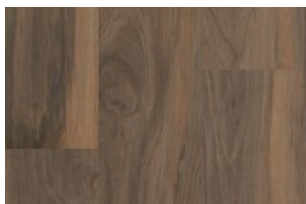
SUS - 00572



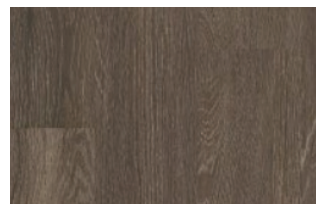
SUS - 00684



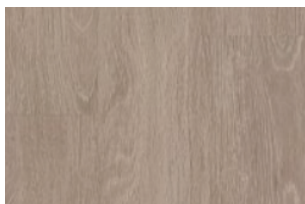
SUS - 00740



SUS - 00769



STR - 00774



STR - 00775



SUS - 05012



# SIL

**Construction**  
High performance Luxury Vinyl Tile

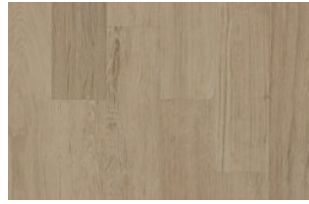
Type	Length	Finish
Resilient	48.00	ExoGuard®
Wear Layer	Spec	Width
20mil	2.5mm	5.96



SIL - 00102



SIL - 00104



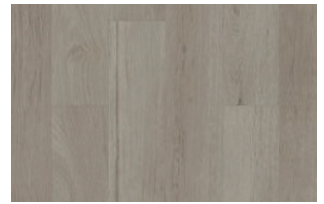
SIL - 00214



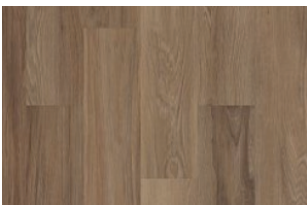
SIL - 00500



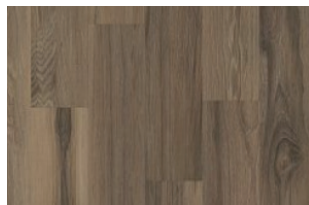
SIL - 00510



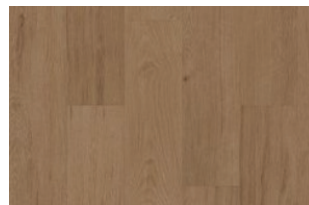
SIL - 00512



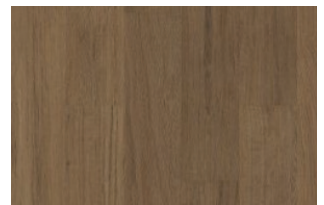
SIL - 00706



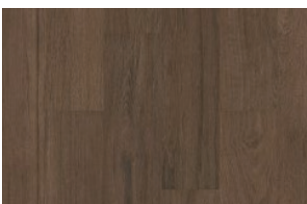
SIL - 00708



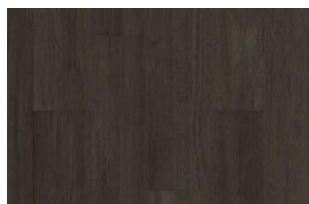
SIL - 00716



SIL - 00718



SIL - 00720



SIL - 00722



# PUR

**Construction**  
High performance Luxury Vinyl Tile

**Type**  
Resilient

**Length**  
48.00

**Finish**  
ExoGuard+®

**Wear Layer**  
20mil

**Spec**  
2.5mm

**Width**  
5.96



PUR - 00100



PUR - 00105



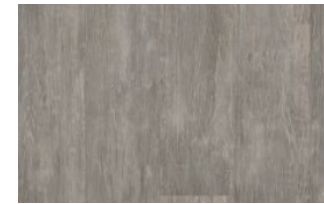
PUR - 00110



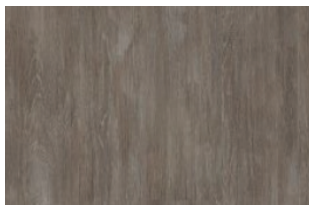
PUR - 00200



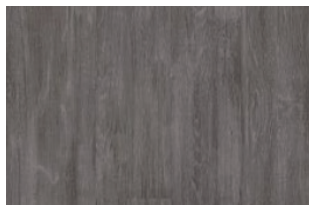
PUR - 00500



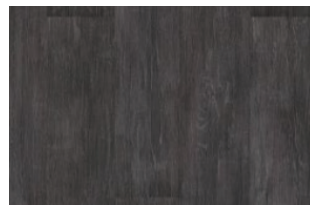
PUR - 00505



PUR - 00510



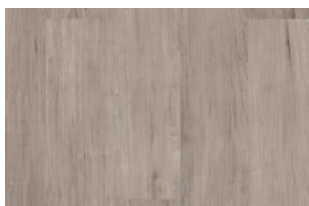
PUR - 00515



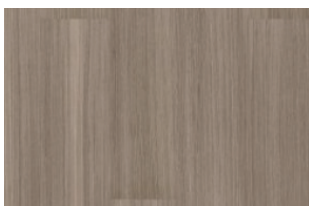
PUR - 00520



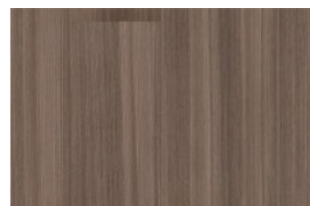
PUR - 00700



PUR - 00705



PUR - 00710



PUR - 00715



PUR - 00720

# COL

**Construction**  
Heavy performance Luxury Vinyl Tile

**Type**

Resilient

**Length**

48.00

**Finish**

ExoGuard®

**Wear Layer**

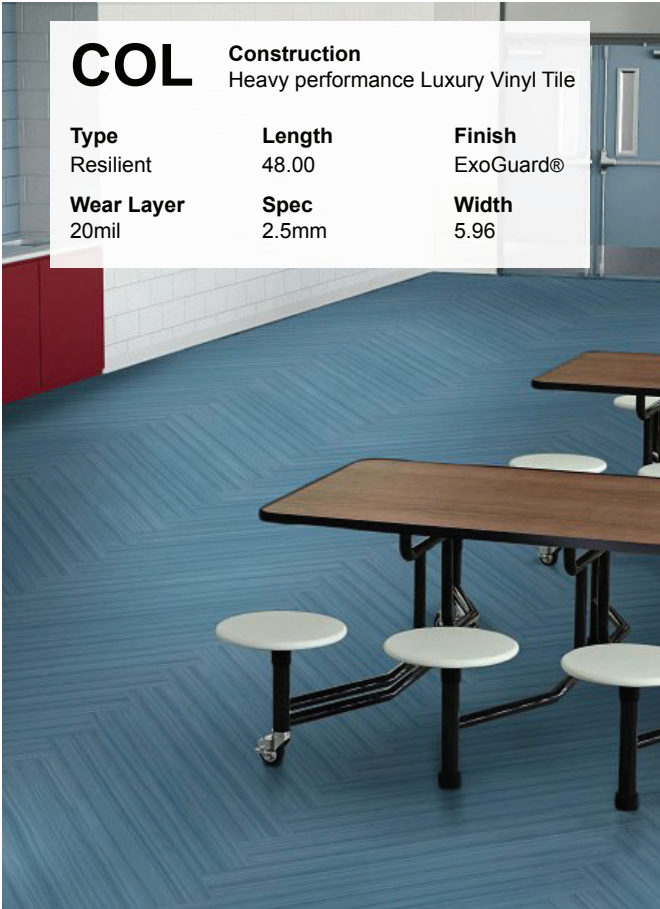
20mil

**Spec**

2.5mm

**Width**

5.96



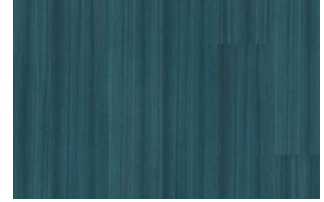
COL - 00230



COL - 00350



COL - 00360



COL - 00370



COL - 00400



COL - 00450



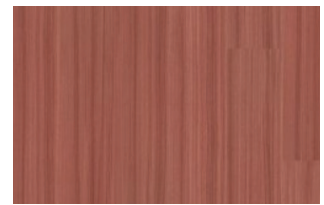
COL - 00540



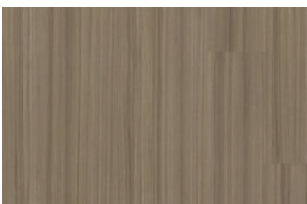
COL - 00580



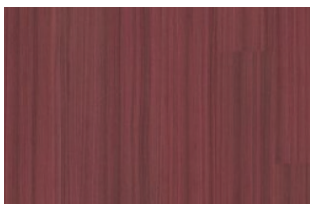
COL - 00600



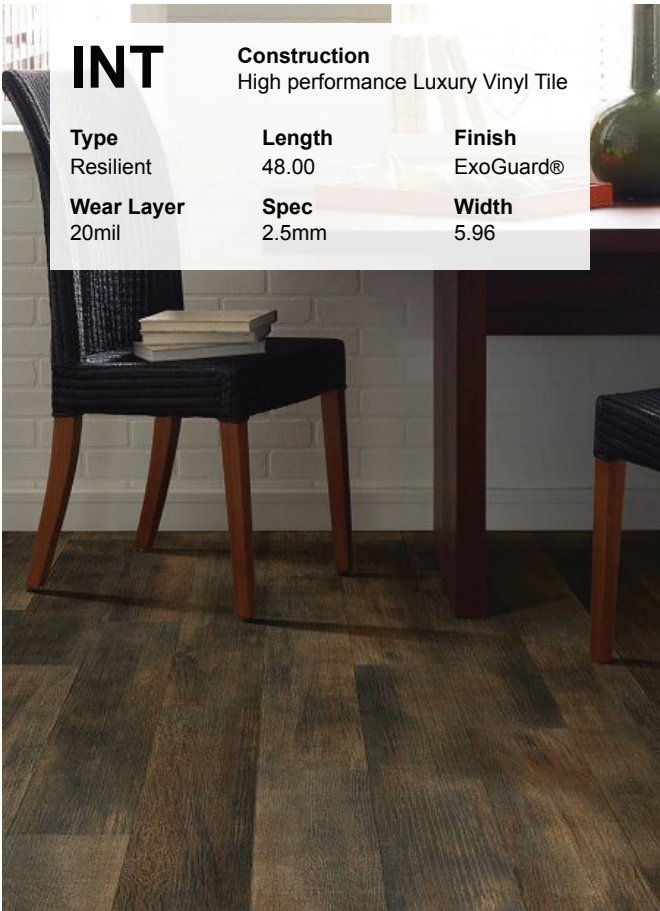
COL - 00650



COL - 00710



COL - 00850



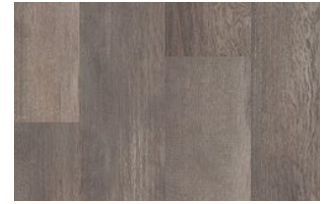
# INT

**Construction**  
High performance Luxury Vinyl Tile

Type	Length	Finish
Resilient	48.00	ExoGuard®
Wear Layer	Spec	Width
20mil	2.5mm	5.96



INT - 00116



INT - 00170



INT - 00173



INT - 00174



INT - 00216



INT - 00256



INT - 00559



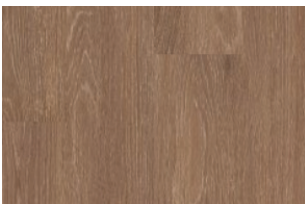
INT - 00564



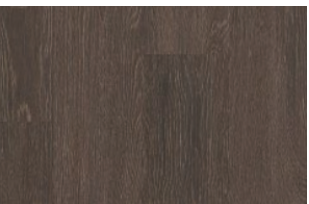
INT - 00568



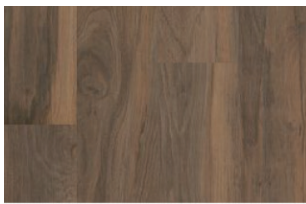
INT - 00572



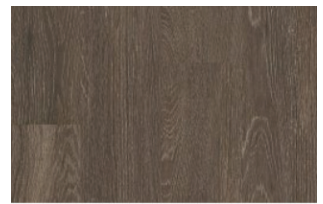
INT - 00684



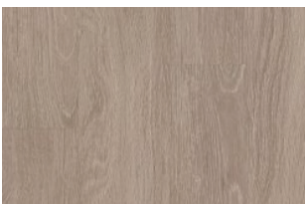
INT - 00740



INT - 00769



INT - 00774



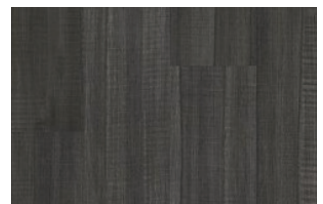
INT - 00775



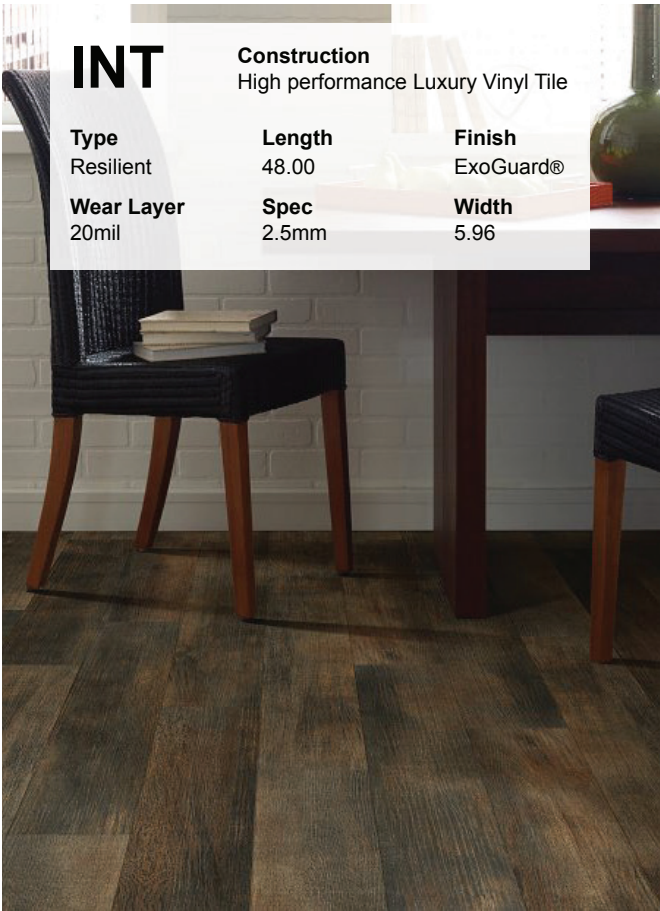
INT - 05012



INT - 05013



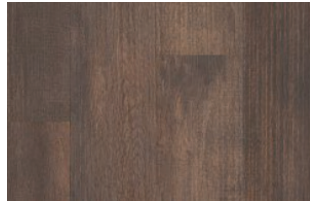
INT - 05016



# INT

**Construction**  
High performance Luxury Vinyl Tile

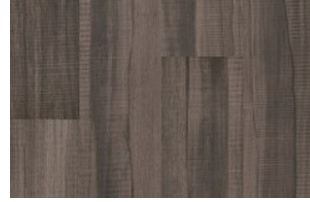
<b>Type</b>	<b>Length</b>	<b>Finish</b>
Resilient	48.00	ExoGuard®
<b>Wear Layer</b>	<b>Spec</b>	<b>Width</b>
20mil	2.5mm	5.96



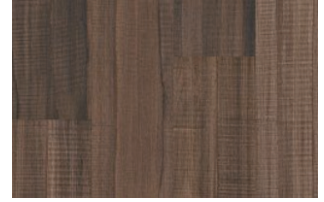
INT - 05019



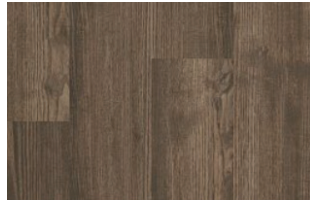
INT - 07003



INT - 07004



INT - 07007



INT - 07008

# IND

**Construction**  
Heavy Commercial Luxury Vinyl

**Type**

Resilient

**Length**

48.00

**Finish**

ExoGuard®

**Wear Layer**

20mil

**Spec**

2.5mm

**Width**

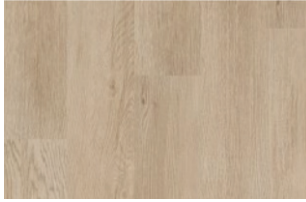
7.00



IND - 00520



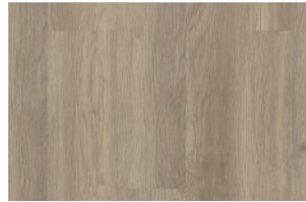
IND - 00825



IND - 01169



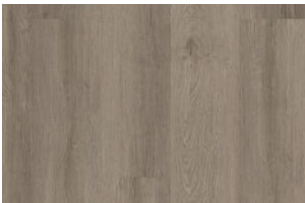
IND - 02027



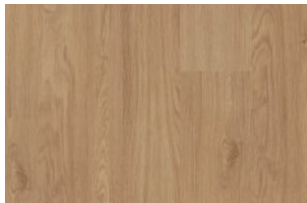
IND - 02028



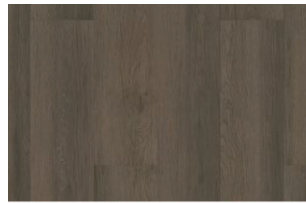
IND - 02029



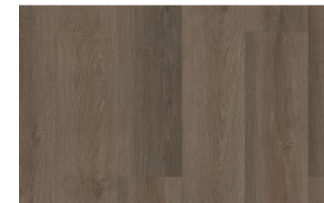
IND - 05100



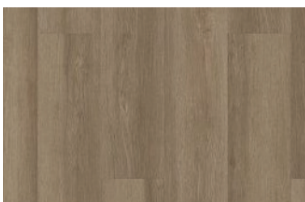
IND - 06040



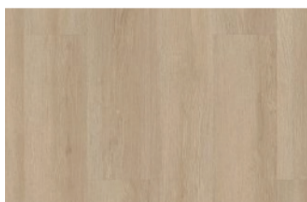
IND - 07099



IND - 07100



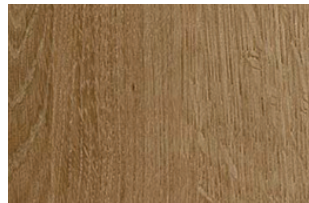
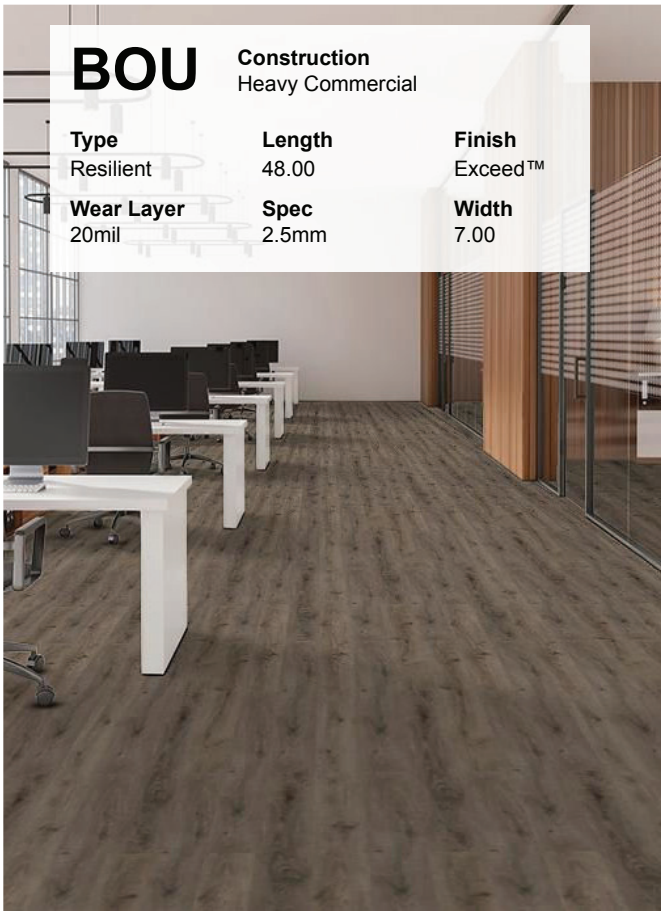
IND - 07192



IND - 07194



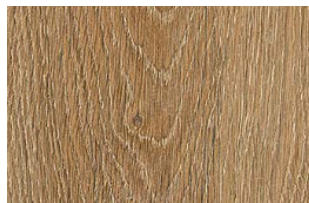
IND - 07195



BOU - 4021



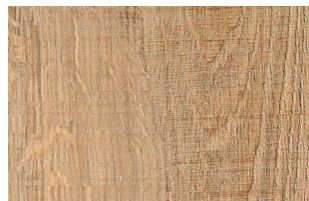
BOU - 4022



BOU - 4023



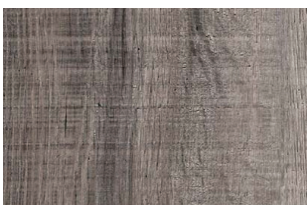
BOU - 4024



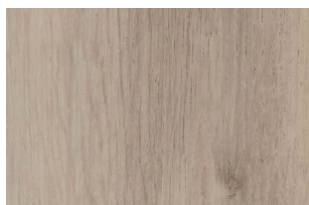
BOU - 4025



BOU - 4026



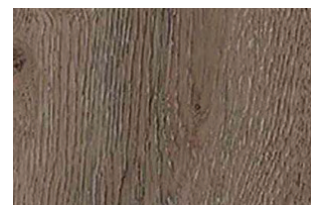
BOU - 4027



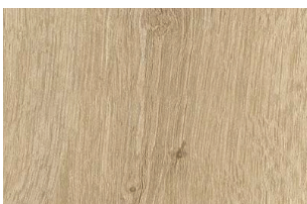
BOU - 4028



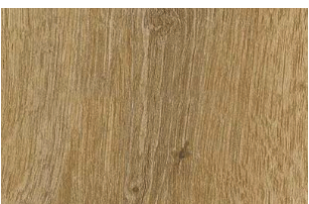
BOU - 4029



BOU - 4030



BOU - 4031



BOU - 4032